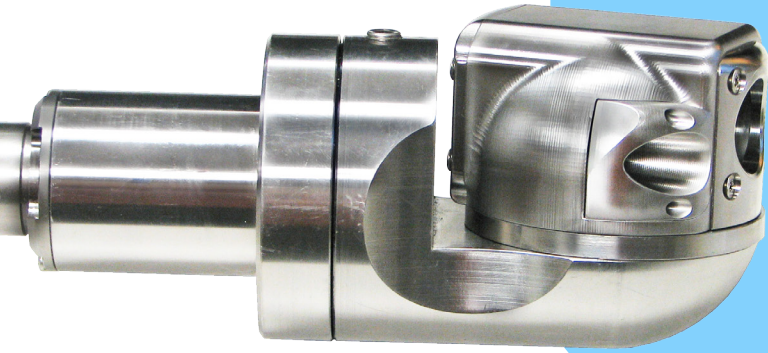


Pan, Tilt, & Zoom Camera V10

Designed and built to take on the most rugged & hostile sewer environments



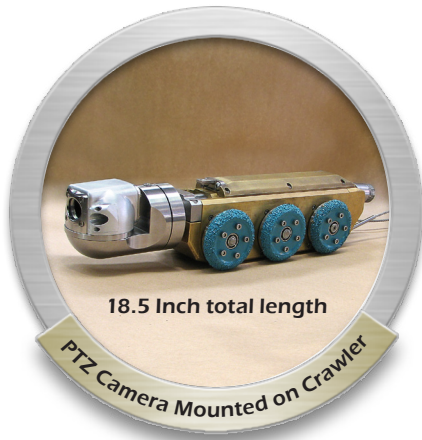
The Cobra PTZ V10 pan, tilt and zoom camera (C310), designed for use with the Cobra 150 has all the features and functionality of our standard PTZ Camera in a smaller package. Using the latest LED Luxeon Star Illuminators, the camera can inspect pipe up to 72" in diameter without the need to add additional lighting for most pipe types.

The V10 camera provides a 10:1 optical zoom. A 4:1 digital zoom is available, however, it is not recommended by Cobra. Digital zoom works by cropping and enlarging the image, interpolating (intelligently guessing) to create new pixels. This results in a blocky, low quality image. Many manufacturers hype digital zoom but due to the above image quality issues, Cobra believes it is not useful in the field.

The directional lighting system of the PTZ V10 camera is "cold" and will not heat the camera module. The lights operate on the same circuit as the camera so when the camera is powered, the lights automatically illuminate at full brightness eliminating the need for the conventional Power Control Unit. This system eliminates burn-outs from the operator turning the lights up too high or turning the lights up too quickly.



Pan, Tilt, & Zoom Camera



18.5 Inch total length

PTZ Camera Mounted on Crawler

GENERAL FEATURES

- "Cold" Luxeon with Narrow and Wide beams for optimum illumination and viewing
- 10:1 Optical Zoom
- Automatic iris and focus with manual override controls for flexibility in operation
- Automatic centering for easy and fast reorientation
- 350° rotate and 270° pan capability for flexibility in operation
- Digital Control System with balanced video amplifiers
- Clutched gear motors to prevent damage to pan and rotate drives
- Operates optimally through a maximum of 3,000' multi-conductor cable
- 100% solid state circuitry designed for harsh, adverse sewer conditions
- The same viewport is used on both the lights and the camera eliminating the need to carry multiple spares
- Light heads are isolated from the camera body so in the event a light head lens is damaged, water will not access the camera head or the camera body
- Life expectancy of the Luxeon Star illuminators is 50,000 hours
- Tested at 5 psi then at 50 psi and finally at one atmosphere of vacuum prior to shipping.
- Stainless steel body and gear construction
- Optional sonde to accurately locate camera in the pipe

All Specifications subject to change.



So Advanced ... It's Simple

www.cobratec.com

sales@cobratec.com

800-443-3761

4806 Wright Dr. Bldg. C Smyrna, GA. 30082